

PI AND SORT FACES 205

Most type fonts contain many more characters than those you normally use for everyday composition. Below is a chart showing the complete character set for Times New Roman. Not that in addition to the normal alphabet, Arabic numerals and punctuation symbols there is a wide and rich selection of foreign letters, accented characters and other special symbols. All of these can be accessed by simply depressing the "alt" key and they typing a "0" (zero) and the two or three number code on the numeric key pad, NOT the upper keyboard row! Try it.

Char:	Code:	Char:	Code:	Char:	Code:	Char:	Code:	Char:	Code:	Char:	Code:
!	33	A	65	a	97	¢	162	Á	193	à	224
“	34	B	66	b	98	£	163	Â	194	á	225
#	35	C	67	c	99	¤	164	Ã	195	â	226
\$	36	D	68	d	100	¥	165	Ä	196	ã	227
%	37	E	69	e	101	¦	166	Å	197	ä	228
&	38	F	70	f	102	§	167	Æ	198	å	229
‘	39	G	71	g	103	¨	168	Ç	199	æ	230
(40	H	72	h	104	©	169	È	200	ç	231
)	41	I	73	i	105	ª	170	É	201	è	232
*	42	J	74	j	106	«	171	Ê	202	é	233
+	43	K	75	k	107	¬	172	Ë	203	ê	234
,	44	L	76	l	108	-	173	Ì	204	ë	235
-	45	M	77	m	109	®	174	Í	205	ì	236
.	46	N	78	n	110	¯	175	Î	206	í	237
/	47	O	79	o	111	°	176	Ï	207	î	238
0	48	P	80	p	112	±	177	Ð	208	ï	239
1	49	Q	81	q	113	²	178	Ñ	209	ð	240
2	50	R	82	r	114	³	179	Ò	210	ñ	241
3	51	S	83	s	115	´	180	Ó	211	ò	242
4	52	T	84	t	116	µ	181	Ô	212	ó	243
5	53	U	85	u	117	¶	182	Õ	213	ô	244
6	54	V	86	v	118	·	183	Ö	214	õ	245
7	55	W	87	w	119	¸	184	×	215	ö	246
8	56	X	88	x	120	¹	185	Ø	216	÷	247
9	57	Y	89	y	121	º	186	Ù	217	ø	248
:	58	Z	90	z	122	»	187	Ú	218	ù	249
;	59	[91	{	123	¼	188	Û	219	ú	250
<	60	\	92		124	½	189	Ü	220	û	251
=	61]	93	}	125	¾	190	Ý	221	ü	252
>	62	^	94	~	126	¿	191	Þ	222	ý	253
?	63	_	95	¡	161	À	192	ß	223	þ	254
@	64	`	96							ÿ	255

The letters, numbers and symbols (glyphs) shown on the chart are fairly typical of what most faces will have.

There are, however, many

variations through the development of "sorts" fonts for special use.

These are special faces which are treated like regular

type except that the individual numerical addresses have substitution images in place of the normal characters, numbers and punctuation.

The variety of available images is almost limitless, ranging from normal typographic symbols to special ones for the bowling league, little league, hunting, fishing, sewing, football, trains, airplanes, religious images, agricultural, architectural and building trades, and many others.

In the next columns you will find specimens from several randomly selected special font packages.

Compare each of the glyphs with its normal numerical address shown on the first page.

While only the alphabet, numerals and punctuation positions are shown, but all of the foreign characters and punctuation addresses are also used to provide positions for special art or characters.

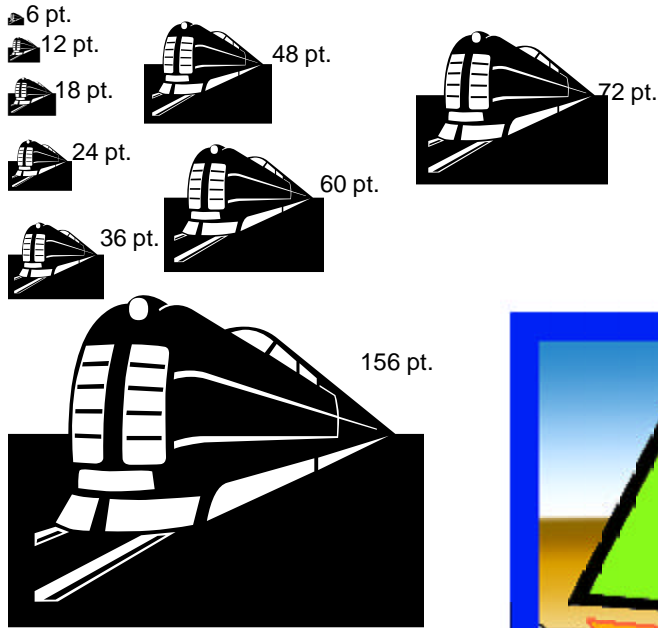
The first two columns are Zapf Dingbats. Columns three and four are from a collection called Webdings. Other popular sorts are Montotype Sorts, Webthings, Wingdings 1, 2 and 3, etc.

Page three shows the effect of enlargement on several characters selected from some of these. Because they are outlines, they enlarge well without degrading. Compare the art in the various sizes

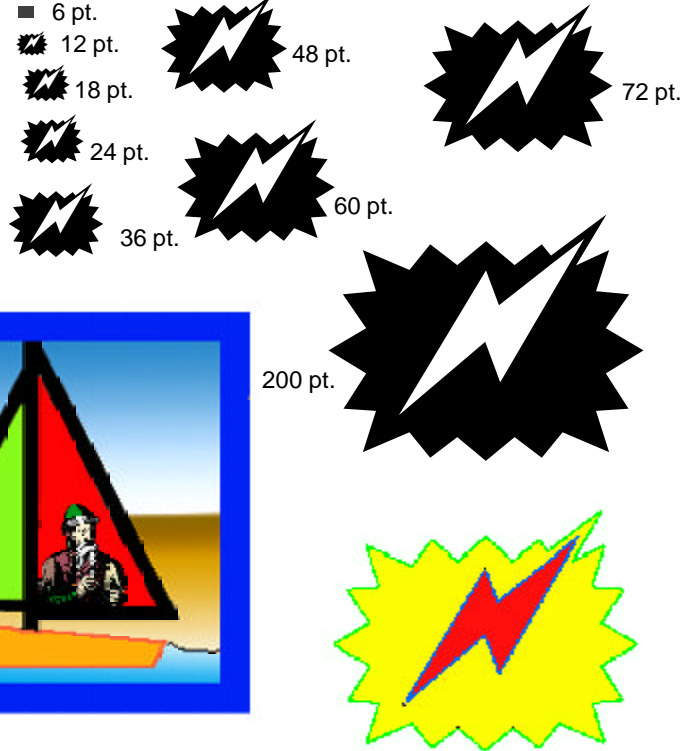
All of them serve to augment the design devices which can be used to enhance typography when it is used for signate, publications, or web design.

☆	65	☼	97	🏠	65	✓	97
✚	66	⊗	98	🏡	66	🚲	98
✚	67	✳	99	🏢	67	◻	99
♣	68	✳	100	🏣	68	♥	100
♣	69	✳	101	🏤	69	📁	101
◆	70	✳	102	🏥	70	📂	102
◇	71	✳	103	🏦	71	■	103
★	72	✳	104	🏧	72	📁	104
☆	73	✳	105	🏨	73	ⓘ	105
⊕	74	✳	106	🏩	74	✈	106
☆	75	✳	107	🏪	75	✎	107
☆	76	●	108	🏫	76	✈	108
☆	77	○	109	🏬	77	!	109
☆	78	■	110	🏭	78	●	110
☆	79	□	111	🏮	79	👤	111
☆	80	□	112	🏰	80	👤	112
✳	81	□	113	🏱	81	🔄	113
✳	82	□	114	🏲	82	✕	114
✳	83	▲	115	🏳	83	?	115
✳	84	▼	116	🏴	84	👤	116
✳	85	◆	117	🏵	85	👤	117
✳	86	❖	118	🏶	86	👤	118
✳	87	◐	119	🏷	87	👤	119
✳	88		120	🏸	88	🚫	120
✳	89		121	🏹	89	⊖	121
✳	90	■	122	🏺	90	⊖	122
✎	48	✂	33	—	48	👤	33
🔗	49		34	◻	49	📄	34
🔗	50	#	35	📁	50	Ⓢ	35
✓	51	✂	36	◀	51	⋮	36
✓	52	🗑	37	▶	52	🏆	37
✕	53	🕒	38	▲	53	🏆	38
✕	54		39	▼	54	🏆	39
✕	55	✈	40	◀	55	🗨	40
✕	56	✉	41	▶	56	🗨	41
✚	57	👉	42	◀	57	🌟	42
		👈	43			🌟	43
		👉	44			🌟	44
		👈	45			🌟	45
		✎	46			🌟	46
		✎	47			🌟	47

A selection from Webdings

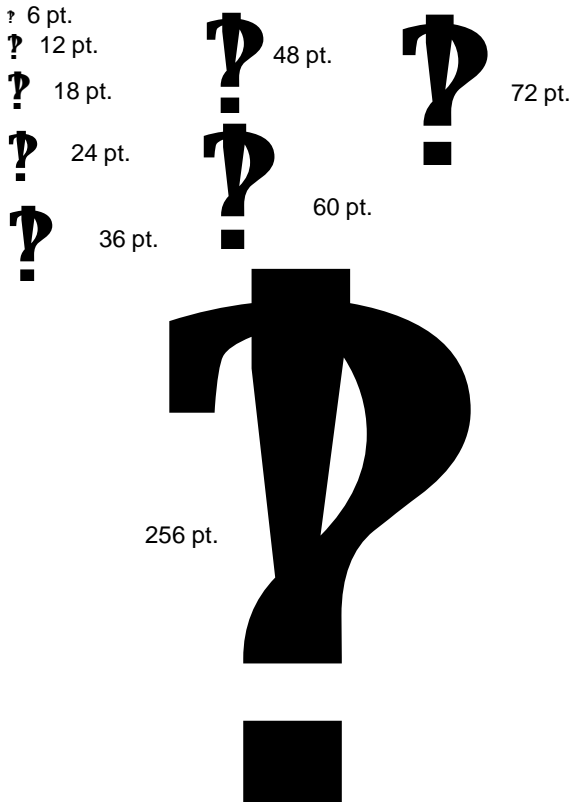


Another selection from Webdings



Any of the sort font glyphs can even be altered in a photo editing program such as PhotoShop and made into multicolored images such as these.

A selection from Wingdings 2



A selection from Minion Ornaments

