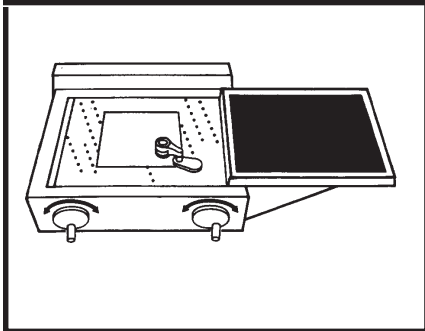




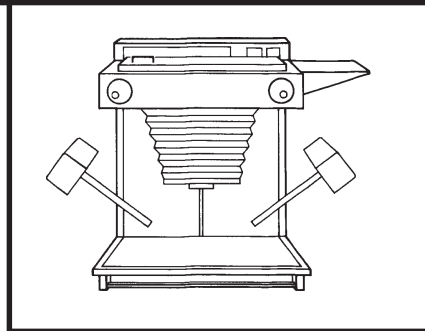
INTRODUCTION TO GRAPHIC COMMUNICATIONS Section No. 905

BASIC CAMERA TECHNIQUES



1. Check the focus of the camera by viewing the image of a screened print (or other image with fine detail) on the ground-glass focusing screen.

This is especially critical for reproducing paste-up copy. Refocus for sharpness, if necessary.



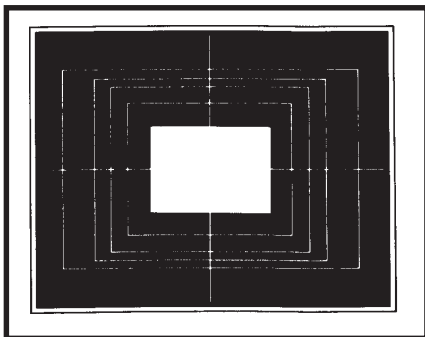
2. Set the camera controls for the desired reproduction size. Set the lens opening at the right *f*/stop.

“Same size,” “1:1,” and “100%” all mean the same thing: the film image should be the same size as the copy. Changes in size are given as a percentage of original size: 150% is half-again larger; 75% is three-quarters of the original size.



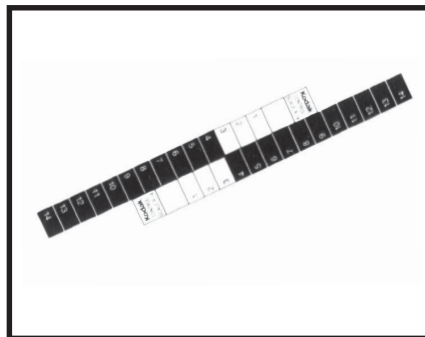
3. Clean the copyboard glass on both sides.

Inspect the glass carefully for dirt before each use. Clean it often with a glass cleaner that does not leave an oily residue on the glass. Be careful not to scratch or chip the glass. Film cleaner removes tape adhesive residue easily.



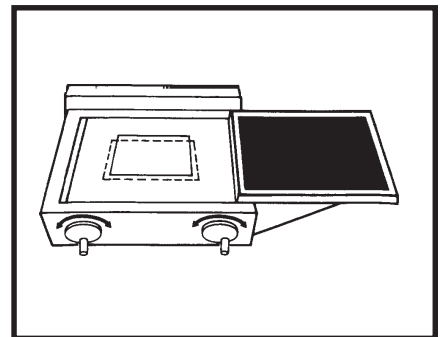
4. Center the copy on the camera copyboard.

Use a medium-gray mat on the copyboard to reduce flare. A large white surround will hurt your exposures. Choose sample art with both fine and bold lines.



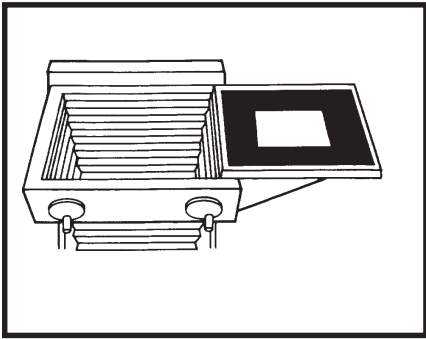
5. Place an opposed gray scale next to the copy.

You can make an opposed gray scale by cutting a single scale along the vertical axis and inverting the halves in respect to each other. Tape them together on the back. Use care to keep them clean.

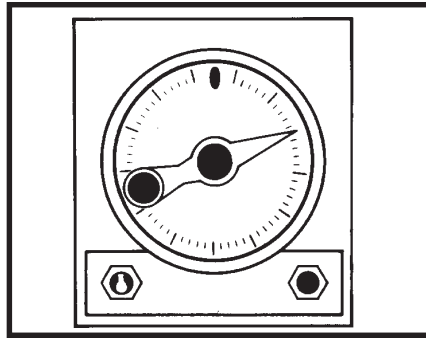


6. Align the image on the ground glass.

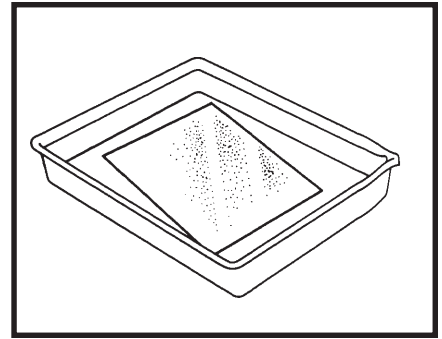
Periodically, use the ground glass to check focus against the camera tapes. Adjust if necessary.



7. Place a sheet of film on the camera's vacuum back so that its emulsion side will face the lens. The film may be used with the recommended red safelights (such as a KODAK Safelight Filter No. 1-A, light red).

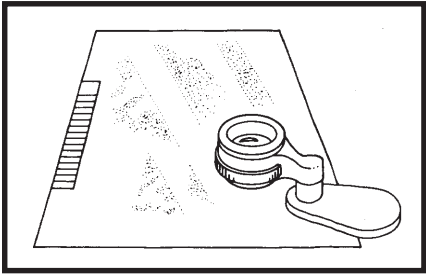


8. Set the timer for the right length of time and make the exposure. Process the film immediately, or store it in a lighttight container.



9. Quickly immerse the film in the tray of developer and agitate it continuously. Follow the time and temperature recommendations on the instruction sheet which accompanies the film. For consistent output, use care to process each sheet of film exactly the same way.

10. see the separate Processing Methods sheet for stop bath, fixing, washing and drying steps.



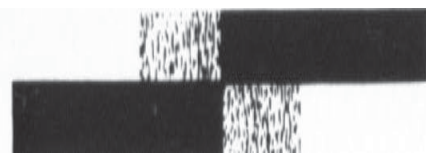
11. Compare the gray scale and the line image. No one exposure is correct for all copy samples. Fine detail requires less exposure (but produces more pinholes) and bolder copy can withstand longer exposures (with consequently fewer pinholes). Note how the opposing gray scales indicate the amount of exposure by the amount of overlap of their blackened steps.



12. Different types of copy will require different exposure times and different gray-scale steps of black and clear areas.



Scale indicating Over exposure, or a correct reference point for bold copy with off-white or soiled background.



Scale indicates normal exposure and development and is the correct reference point for average copy.



Scale indicates under exposure or weak developer, or is correct reference point for weak copy or very fine lines.